

BEARDMORE DAM MASTERPLAN: PICNIC AND RECREATION AREA

For: Balonne Shire Council
Sept 2021



Produced by:
GROUP GSA

CONTENTS

1.0	EXECUTIVE SUMMARY	3
1.0	EXECUTIVE SUMMARY	4
1.1	MASTERPLAN PROCESS	5
1.2	COMMUNITY CONSULTATION - PROCESS	6
1.3	CONSULTATION RESULTS	7
2.0	CONTEXT & ANALYSIS	8
2.1	REGIONAL CONTEXT	9
2.2	SITE CONTEXT	10
2.3	EXISTING SITE	11
2.4	EXISTING FACILITIES	12
3.0	PROPOSED MASTERPLAN: BEARDMORE DAM	13
3.1	DESIGN STRATEGY	14
3.2	BEARDMORE DAM MASTERPLAN	15
3.3	BEARDMORE DAM - NORTH	16
3.4	BEARDMORE DAM - SOUTH	17
3.5	CIRCULATION & WAYFINDING	18
3.6	PRECEDENT IMAGES	19
3.7	COLOUR PALETTE	20
3.8	MATERIALS PALETTE	21
3.9	REVEGETATION SPECIES	22
3.10	PLANTING PALETTE	23



Issue	Title	Date	Prepared	Checked
A	Draft Analysis Report	25/02/2020	GD	JH
B	Analysis Report	22/06/2020	GD	JH
C	Discussion Paper	22/06/2020	GD	JA
D	Beardmore Dam Draft Masterplan	11/12/2020	GD	JA
E	Beardmore Dam Masterplan	09/07/2021	GD	JH
F	Final Beardmore Dam Masterplan	30/09/2021	JH	JH

We acknowledge and respect the Traditional Custodians of the lands this document is created for; The Kamilaroi, Kooma, Manandanji, Gungarri, and Bigambul people.

We recognise their unique ability to care for country and deep spiritual connection to it

We honour Elders past, present and emerging whose knowledge and wisdom has and will ensure the continuation of cultures and traditional practices.





1.0 EXECUTIVE SUMMARY

EXECUTIVE SUMMARY

GroupGSA have been engaged by Balonne Shire Council to prepare Masterplans for St George, Bollon and Beardmore Dam covering the following areas:

- 1 – St George River Foreshore
- 2 – St George CBD
- 3 – St George Streetscape
- 4 – Rowden Park
- 5 – Bollon Wallam Creek RV Park
- 6 – Bollon Streetscape
- 7 – Beardmore Dam Picnic & Recreation Area

This document encompasses the Beardmore Dam Picnic & Recreation Area

The project will provide recreational, social and environmental opportunities with a fit for purpose Masterplan which considers the size of the Council, previous works and future direction.

OBJECTIVES

The overall objectives of the Project we recognise to be as follows:

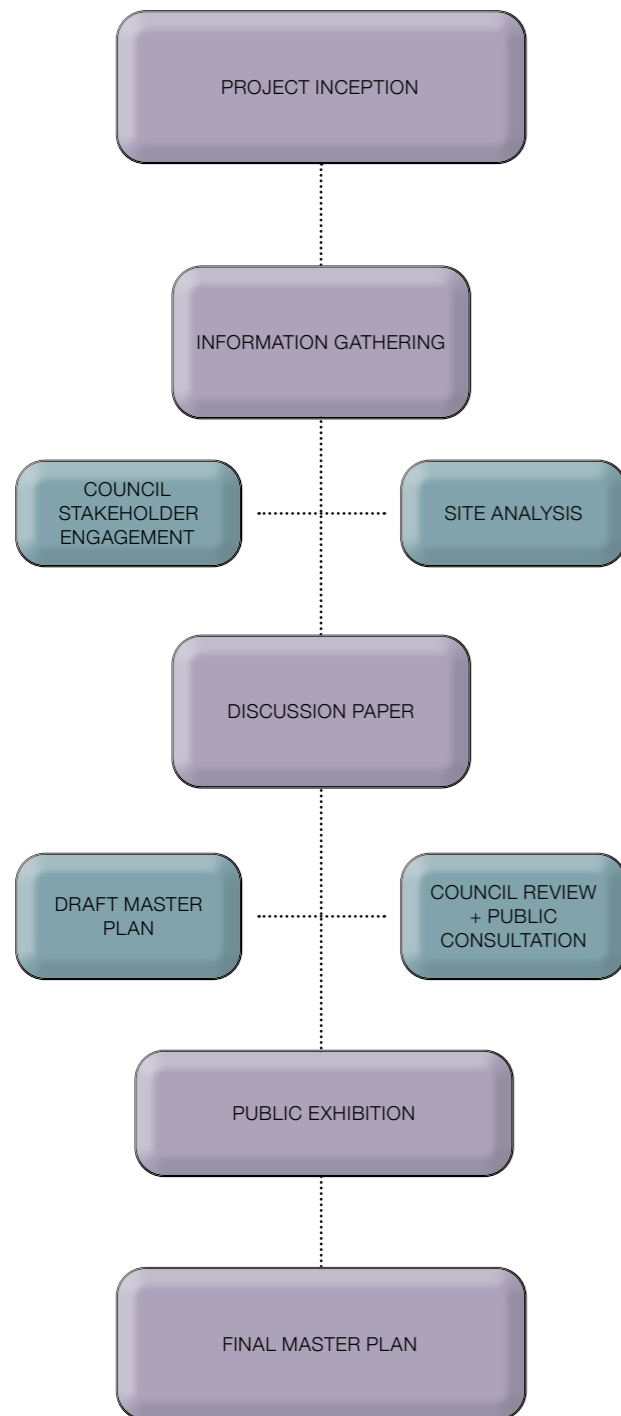
- + Develop a cohesive Masterplan, based on a clear strategy that capture and reinforce the distinct qualities of the Beardmore Dam Picnic & Recreation Area
- + To articulate a succinct analysis that identifies a targeted direction to enhance the vibrancy of the area; and identifies avenues where a 'niche' can be achieved to attract visitors and residents
- + Incorporate tourism, art and cultural strategies as a part of the revitalisation of the Beardmore Dam Picnic & Recreation Area
- + To consider the location for events both regular and or special events
- + Design 'context sensitively' and to site specificity achieving a balance between sustaining river health and landscape character while providing enhanced recreation opportunities and well-being outcomes for community by showcasing Balonne Shire Council
- + Improve the overall environment through landscape improvements
- + To determine a schedule of costed projects and improvements for future staged implementation



1.1 MASTERPLAN PROCESS

MASTERPLAN PROCESS

By engaging with multiple types of community consultation, GroupGSA has been able to establish a strong understanding of what is both required and desired in St George, Bollon and Beardmore Dam for their respective masterplans.



DESIGN DRIVERS

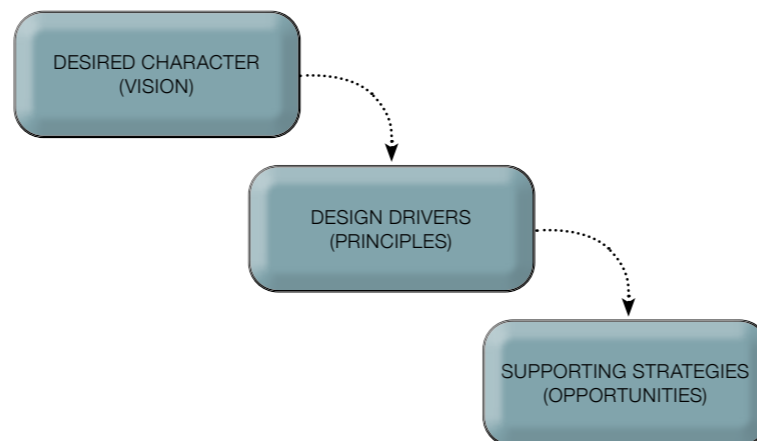
GroupGSA has outlined a number of design driving principles to be woven throughout the various masterplans.

These are:

- + Build upon the unique character of Beardmore Dam and the surrounding area
- + Strengthen the existing connection to natural assets like the Balonne River
- + Make it attractive & welcoming to residents and visitors alike & appealing to a diverse age range
- + Safe, accessible & equitable for all; making it easy for all to get around
- + Create consistency in materials, furniture, trees, planting & overall appearance
- + Enhance greenery to ensure that trees and planting suit the environment with a view to long-term sustainability
- + Enable the public to utilise Beardmore Dam as a setting for activities & events to increase local tourism business
- + Ensure that ideas are cost effective & 'do-able' by setting priorities, creating manageable packages of works & phasing works over time

SUPPORTING STRATEGIES

The strategies are directly linked to the design principles with the majority of these deriving from the community engagement process, both online and in person. These strategies become opportunities to be utilised throughout the master planning process.



DESIGN DRIVER	SUPPORTING STRATEGIES
Unique Character	<ul style="list-style-type: none"> + Emphasise inland fishing destination through education, tourism & events + Capitalise on the unique location to provide niche sports experiences such as gliding & various river sports + Collaboration with local designers & artists
Create consistency	<ul style="list-style-type: none"> + Select appropriate furniture & materials palettes to suit the character, style & requirements of the Beardmore Dam Recreation Area + Where possible, specify locally sourced materials & collaborate with local artists
Attractive & welcoming to residents & visitors	<ul style="list-style-type: none"> + Provide information at Beardmore Dam and in St George to make visitors aware of the facilities and activities + Give children of all ages varied places of interest & play
Connection to natural assets	<ul style="list-style-type: none"> + Provide additional amenity to increase visitor enjoyment & length of stay + Establish new native tree growth to ensure longevity of trees & habitat + Revitalising the recreation area to Beardmore Dam without losing its natural appeal
Enhance greenery	<ul style="list-style-type: none"> + Using trees and planting as opportunities to establish & emphasise local character + Select plant & tree species that not only provide amenity but also suit the extremes of the local climate + Examine multiple opportunities for tree planting to maximise summer shade/winter sun
Enable the public domain to support a diverse, thriving economy as a setting for activities & events	<ul style="list-style-type: none"> + Ensure outdoor event spaces are designed to be adaptable for different types of events & varying scales of attendance such as water-sporting events, community events and private events + Provide access and amenities required for future recreational activities to be facilitated at Beardmore Dam

1.2 COMMUNITY CONSULTATION - PROCESS

ONLINE SURVEY

In April and May 2020 GroupGSA and Balonne Shire Council conducted a series of online community consultation surveys

The surveys were open for approximately 4 weeks and were promoted through the Balonne Shire Council's website and Facebook page.

A video was also created to promote the online surveys which were designed to gain feedback from both locals and visitors to the region.

In total there were 34 responses to the Beardmore Dam Recreation Area consultation survey.

ON-SITE CONSULTATION

On Saturday 6th of June 2020 GroupGSA and Balonne Shire Council Hosted a community consultation event in St George from 10am-1pm

This event provided an opportunity for locals and visitors to contribute Their ideas and feedback on the Beardmore Dam Recreation area to GroupGSA for use in developing the masterplan.

GroupGSA exhibited a range of boards designed to stimulate ideas and conversations around what could be implemented as part of the new masterplan and attendees from the community were able to provide feedback either directly to GroupGSA via feedback forms or email or drop their feedback to Council.

HAVE YOUR SAY ON THE FUTURE OF ST GEORGE

Balonne Shire Council have engaged GroupGSA Landscape Architects to prepare a Master Plan for St George.

Council is calling residents, businesses & visitors to tell us their ideas for improving St George with a focus on:

- The St George CBD & Streetscape
- The Riverfront
- Rowden Park
- Beardmore Dam

Council and consultants are hosting a number of upcoming events:

	Event 1	Event 2	Event 3
WHAT:	CBD Community Walk	Riverfront Community Walk	Community Marquee
WHEN:	Friday 5th June 2020 8am - 10am	Saturday 6th June 2020 7am - 9am	Saturday 6th June 2020 10am - 1pm
WHERE:	Meet at the St George Library, 112 Victoria St	Meet at the Amphitheatre opposite Rowden Park	At Balonne Shire Council Offices 118 Victoria St

Social distancing measures and group limits will be in effect. The community walks will have a maximum of 10 people per group. Registration is essential. For more information or to RSVP, contact:

Tiffany Kajewski
Project Officer - Balonne Shire Council
P. 07 4620 8856
E. Tiffany.Kajewski@balonne.qld.gov.au

Meet & walk with us to discuss ideas for St George & Beardmore Dam
No idea is too big or small!

HAVE YOUR SAY ON THE FUTURE OF ST GEORGE

Balonne Shire Council have engaged GroupGSA Landscape Architects to prepare a Master Plan for St George. Council is calling residents, businesses & visitors to tell us their ideas for improving St George with a focus on:

- The St George CBD & Streetscape
- The Riverfront
- Rowden Park
- Beardmore Dam

Council & consultants are hosting a number of events. Community walks will have a maximum of 10 people per group. Registration is essential. See reverse for details.

	Event 1	Event 2	Event 3
WHAT:	CBD Community Walk	Riverfront Community Walk	Community Drop-in
WHEN:	Friday 5th June 8am - 10am	Saturday 6th June 7am - 9am	Saturday 6th June 10am - 1pm
WHERE:	Meet at the St George Library, 112 Victoria St	Meet at the Amphitheatre opp Rowden Park	Balonne Shire Council Offices 118 Victoria St

HAVE YOUR SAY ON THE FUTURE OF ST GEORGE

PUBLIC EVENTS // REVITALISE THE CBD // TOURISM // BEAUTIFY THE RIVERFRONT // WATER SPORTS // STREET TREES // INVESTMENT OPPORTUNITIES PUBLIC LIGHTING // SAFE PEDESTRIAN ACCESS // SHADY PARKING // WEEKEND SPORTS // WAYFINDING // PARKING // RECREATION

Social distancing measures and group limits will be in effect. The community walks will have a maximum of 10 people per group. Registration is essential. For more information or to RSVP, contact:

Tiffany Kajewski
Project Officer - Balonne Shire Council
P. 07 4620 8856
E. Tiffany.Kajewski@balonne.qld.gov.au

Meet & walk with us to discuss ideas for St George & Beardmore Dam
No idea is too big or small!

Community Consultation

Master plans for St George CBD and Streetscape, Balonne River Foreshore, Rowden Park, Bollon RV and Streetscape and the Beardmore Dam Recreation Area

Council is getting ready to prepare exciting new master plans for the St George river foreshore, St George town centre, Rowden Park, Bollon streetscape and RV park, and the Beardmore Dam Recreation Area.

We want to hear what you would like to see your outdoor open spaces and place become as we build our vision for a more vibrant and active community.

Learn more by watching the short video below and take part in the surveys:

[WATCH VIDEO NOW](#)

You can participate by completing the below online surveys:

- ST GEORGE CBD
- ST GEORGE RIVER FORESHORE
- ROWDEN PARK
- BOLLON STREETScape AND RV PARK
- BEARDMORE DAM RECREATIONAL AREA

All responses MUST be completed and returned prior to Sunday 24 May 2020.



BEARDMORE DAM RECREATION AREA WE WANT TO HEAR YOUR IDEAS

- + PICNIC & BBQ FACILITIES
- + FISHING & BOATING
- + PLAY & RECREATION
- + HERITAGE & CULTURE
- + EVENTS & TOURISM
- + WALKING TRAILS
- + TREES & LANDSCAPING

1.3 CONSULTATION RESULTS

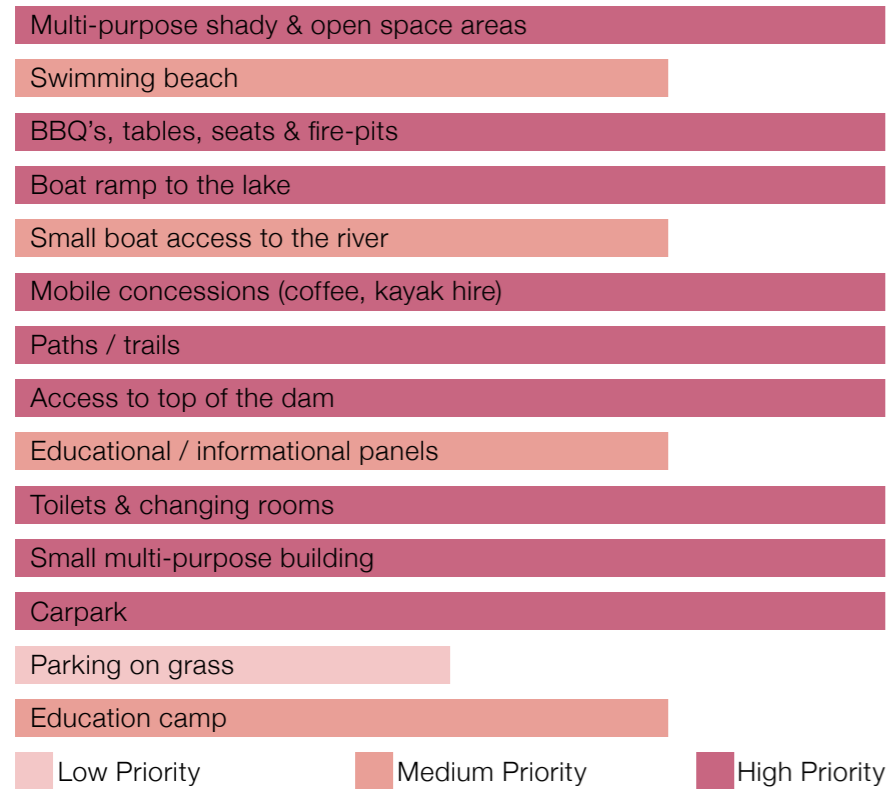
ONLINE SURVEY

The Beardmore Dam online community consultation survey had 34 respondents.

Some of the key findings from the survey:

FACILITIES

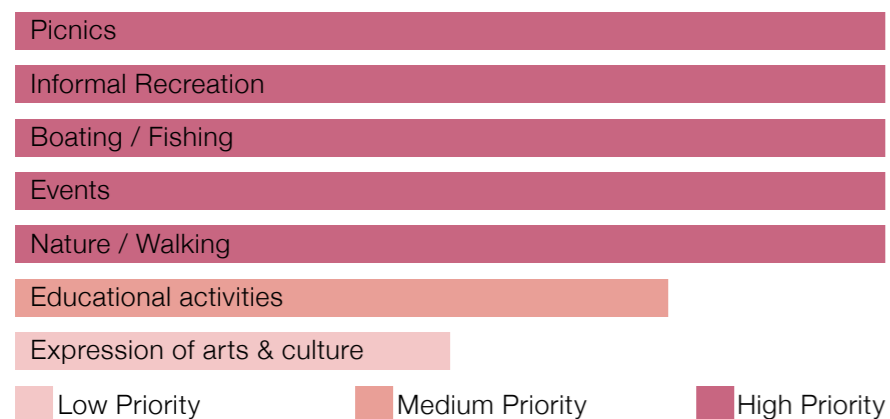
Priority of facilities to be provided at Beardmore Dam:



The majority of facilities were flagged as a high priority to be provided. Some of these facilities previously existed and have been removed. There is a strong desire to reinstate them.

ACTIVITIES

Priority of activities to be facilitated along at Beardmore Dam:



ACTIVITIES CONT'D

Almost all activities were flagged as a high priority. There is a desire to see more activities return to Beardmore Dam.

Other activities suggested:

- + Community events
- + Overnight camping

ON-SITE CONSULTATION

The community marquee conducted on the 6th June 2020 offered the opportunity for attendees to provide their ideas and feedback.

ISSUES

Facilities:

- + Lacks basic recreation facilities such as BBQ & play area
- + Toilet facilities due for an upgrade
- + Sunwater currently does not permit overnight stays
- + Access to the boat ramp is currently restricted

OPPORTUNITIES

Amenity & Facilities:

- + Plenty of open space to provide facilities without making the area lose it's natural beauty and appeal
- + Upgrading toilet facilities could also include change rooms

Activities & Recreation:

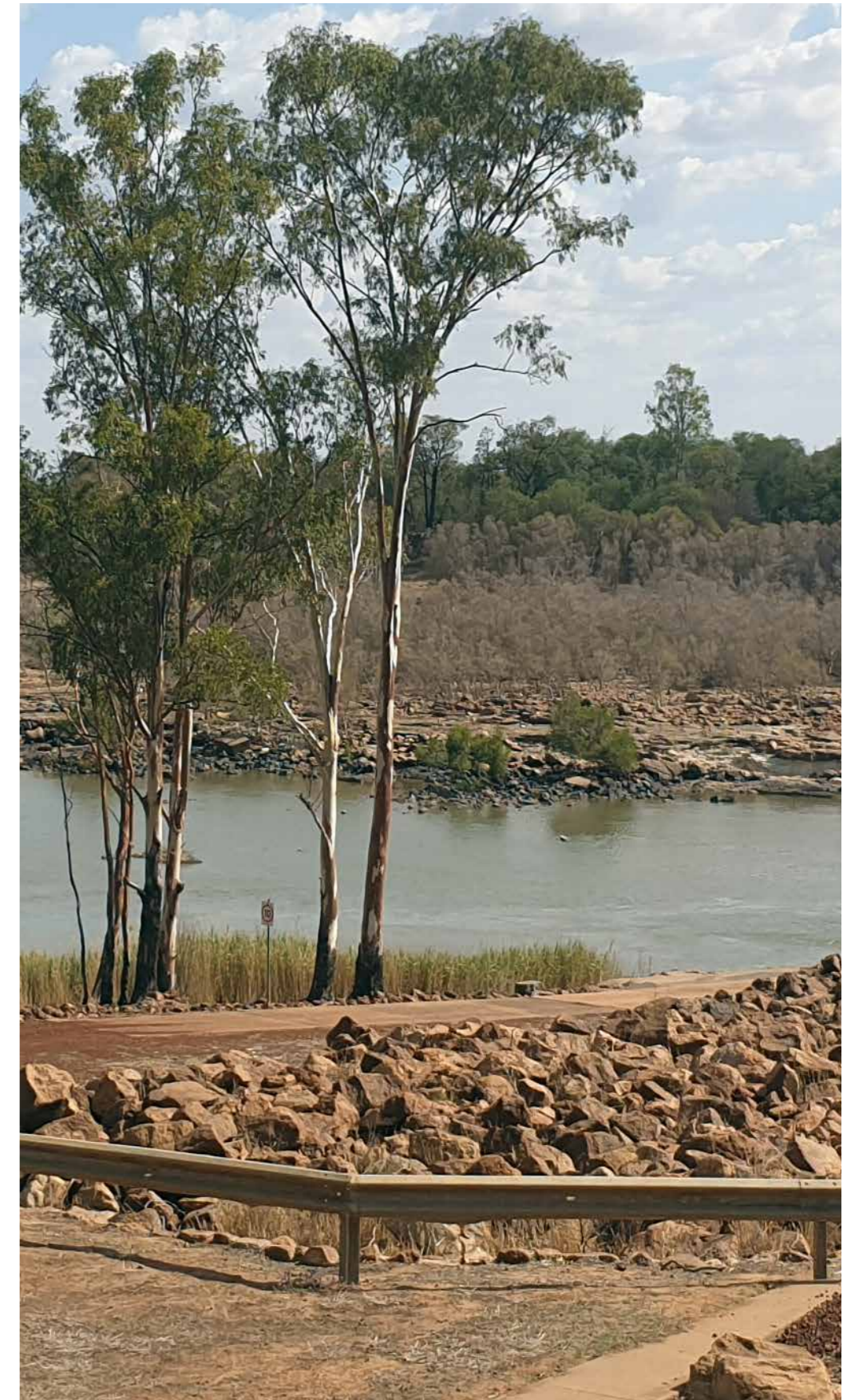
- + Better lookouts over the dam to capture views
- + Large area means plenty of space for walking and biking trails similar to a national park
- + Nature play would be well suited to the site
- + Low ropes course, flying fox and obstacles for play and team building activities
- + Overnight camping pending permission from Sunwater
- + Reinstate boat access for water sports and fishing in a convenient location to the recreation area

Events:

- + With better facilities, Beardmore Dam would be able to host community and tourism related events

Education & Environment:

- + An educational camp with cabins & activities for locals and tourist groups would allow for supervised overnight stays
- + Rehabilitate / re-vegetate native trees and flora
- + Kangaroo and bird feeding





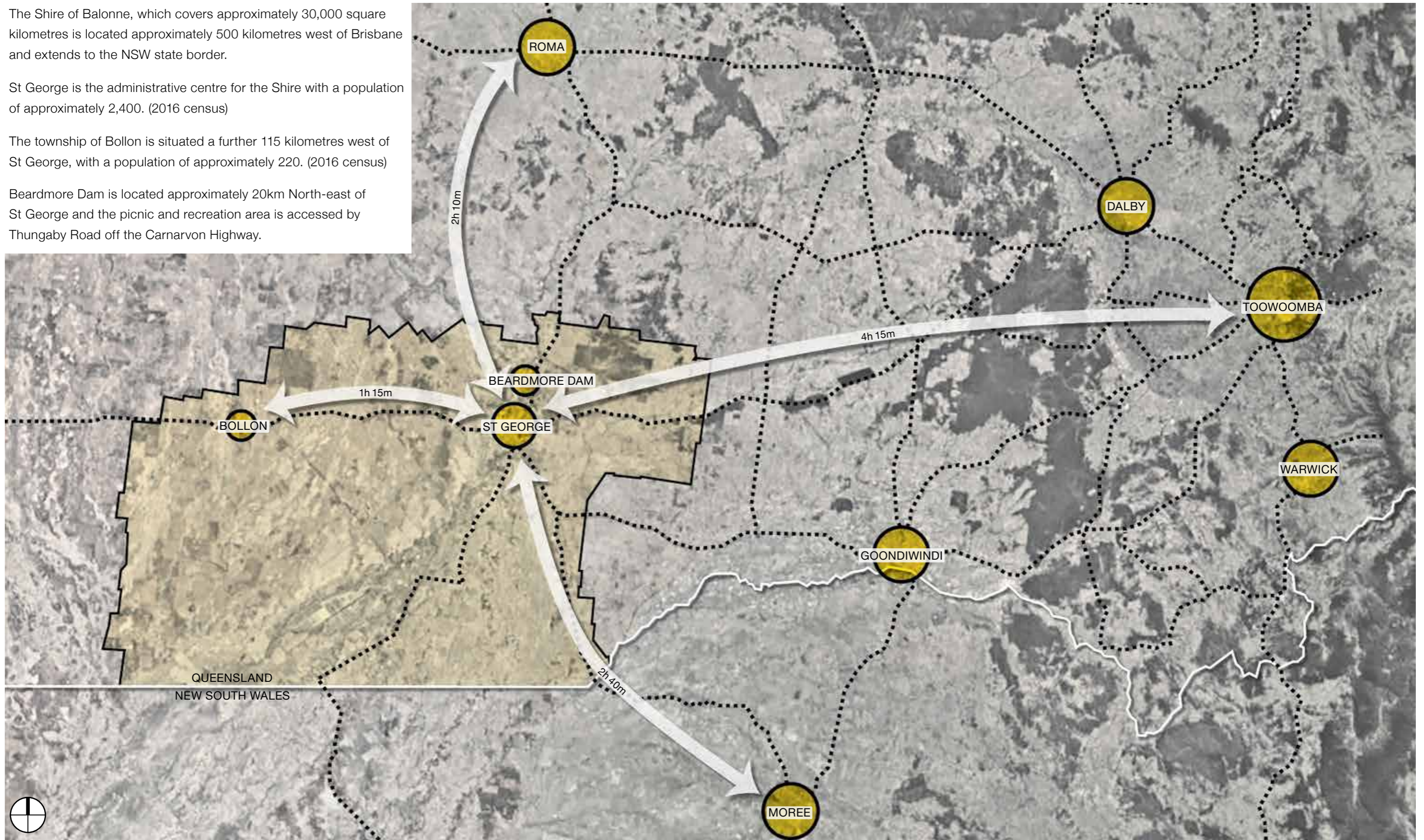
2.1 REGIONAL CONTEXT

The Shire of Balonne, which covers approximately 30,000 square kilometres is located approximately 500 kilometres west of Brisbane and extends to the NSW state border.

St George is the administrative centre for the Shire with a population of approximately 2,400. (2016 census)

The township of Bollon is situated a further 115 kilometres west of St George, with a population of approximately 220. (2016 census)

Beardmore Dam is located approximately 20km North-east of St George and the picnic and recreation area is accessed by Thungaby Road off the Carnarvon Highway.







2.2 SITE CONTEXT

The Beardmore Dam Picnic Area is located approximately 22 kilometres north of St George and is approximately 8 kilometres off the Carnarvon Highway.



LEGEND:

-  Beardmore Dam (Lake Kajarabie)
-  Balonne River
-  Picnic & Recreation Area
-  Designated Carpark

2.3 EXISTING SITE

Beardmore Dam is located approximately 22 kilometres north of St George and is approximately 8 kilometres off the Carnarvon Highway.

There is currently an existing picnic and recreation area that is sparsely furnished.

LEGEND:

- ① Car Park
- ② Picnic & Recreation Area
- ③ Spillway
- ④ Balonne River
- ⑤ Access from Carnarvon Highway
- ⑥ Lookout
- Edge of Dam
- Beardmore Dam (Lake Kajarabie)
- Balonne River
- Picnic & Recreation Area



2.4 EXISTING FACILITIES

PICNIC AREAS



CAR PARKING



LOOKOUTS



INFORMATION



ANALYSIS:

Beardmore Dam has ample space for picnicking and recreation. While there are some facilities available, there is opportunity to provide more including the opportunity to formalise some paths from the carpark to sheltered picnic areas to make the area more accessible for prams and people with mobility issues.

There are plenty of trees around the site and designated carparking areas. While the understorey is primarily grass or dirt, there are opportunities to provide some appropriate, low maintenance indigenous planting to provide visual amenity.

3.0 PROPOSED MASTERPLAN: BEARDMORE DAM

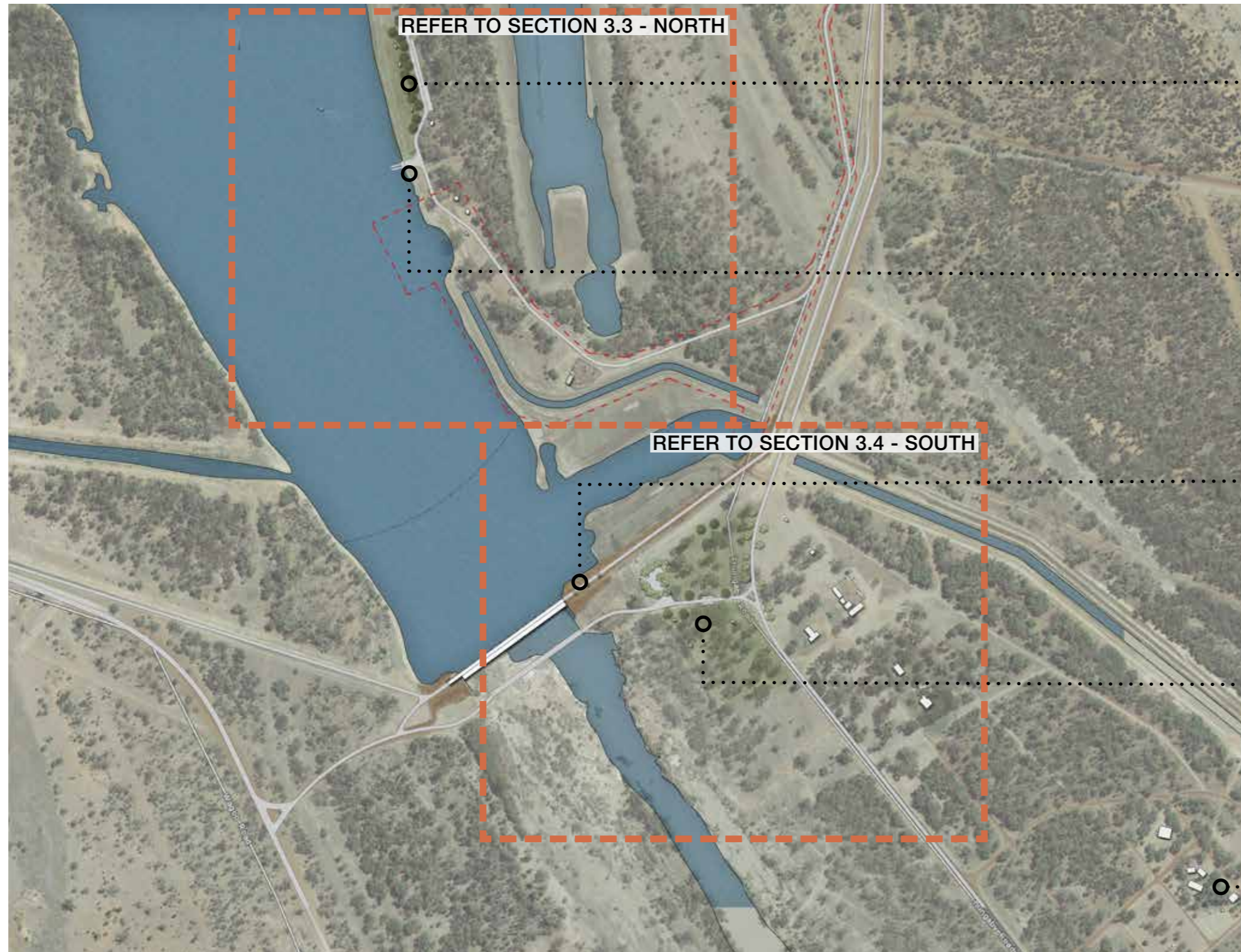


3.1 DESIGN STRATEGY

DESIGN DRIVER	SUPPORTING STRATEGIES
Unique Character	<ul style="list-style-type: none"> + Emphasise inland fishing destination through education, tourism & events + Capitalise on the unique location to provide niche sports experiences such as gliding & various river sports + Collaboration with local designers & artists
Create consistency	<ul style="list-style-type: none"> + Select appropriate furniture & materials palettes to suit the character, style & requirements of the Beardmore Dam Recreation Area + Where possible, specify locally sourced materials & collaborate with local artists
Attractive & welcoming to residents & visitors	<ul style="list-style-type: none"> + Provide information at Beardmore Dam and in St George to make visitors aware of the facilities and activities + Give children of all ages varied places of interest & play
Connection to natural assets	<ul style="list-style-type: none"> + Provide additional amenity to increase visitor enjoyment & length of stay + Establish new native tree growth to ensure longevity of trees & habitat + Revitalising the recreation area to Beardmore Dam without losing its natural appeal
Enhance greenery	<ul style="list-style-type: none"> + Using trees and planting as opportunities to establish & emphasise local character + Select plant & tree species that not only provide amenity but also suit the extremes of the local climate + Examine multiple opportunities for tree planting to maximise summer shade/winter sun
Enable the public domain to support a diverse, thriving economy as a setting for activities & events	<ul style="list-style-type: none"> + Ensure outdoor event spaces are designed to be adaptable for different types of events & varying scales of attendance such as water-sporting events, community events and private events + Provide access and amenities required for future recreational activities to be facilitated at Beardmore Dam



3.2 BEARDMORE DAM MASTERPLAN



Waterfront Recreation Area with Picnic Settings and Shelters



Concrete Boat Ramp



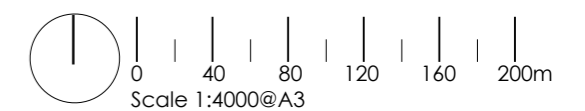
Cantilevered Shelters with Concrete Seating to the top of the dam



Refurbished Picnic & Barbeque Recreation Area



Refurbished Existing Camp Area. To be privately operated.



3.3 BEARDMORE DAM - NORTH

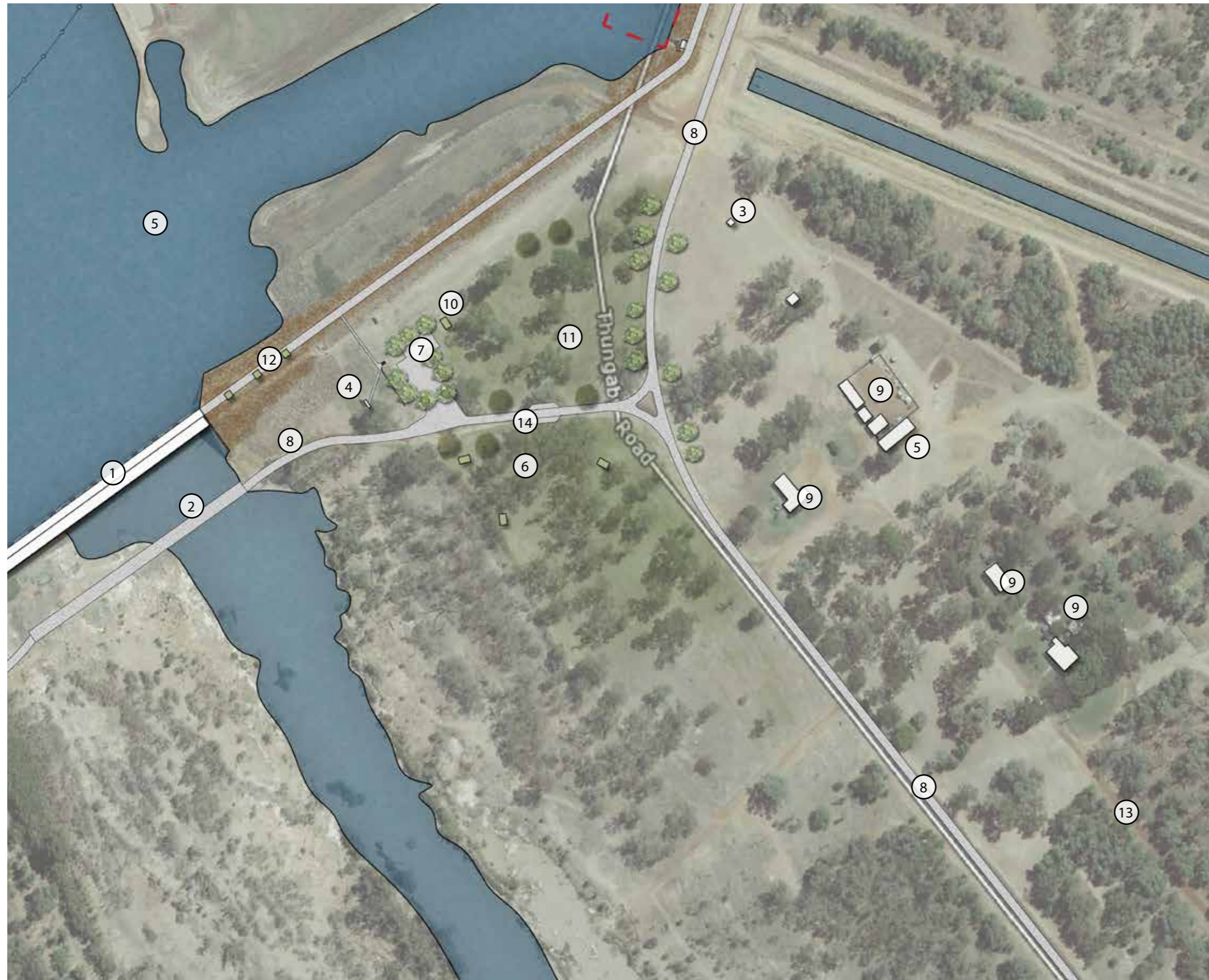


LEGEND:

- ① Proposed Concrete Boat Ramp
 - ② Boom Gate to restrict access when dam is at 25% capacity or less
 - ③ Existing Road through Mallowa Irrigation Easement. To be fenced on the eastern side.
 - ④ Motorised Water-craft Zone. 6 knot limit recommended
 - ⑤ Sunwater
 - ⑥ Waterfront Picnic & BBQ Areas With Shelters
 - ⑦ Car Parking
 - ⑧ Boat Trailer Parking
 - ⑨ Existing Structures - Restricted Area
 - ⑩ New Amenities Block - 2 x WC, 1 x Shower
 - ⑪ Extended Vehicular Access
 - ⑫ Fish Cleaning Facilities
- Extent of Mallowa Irrigation Easement



3.4 BEARDMORE DAM - SOUTH

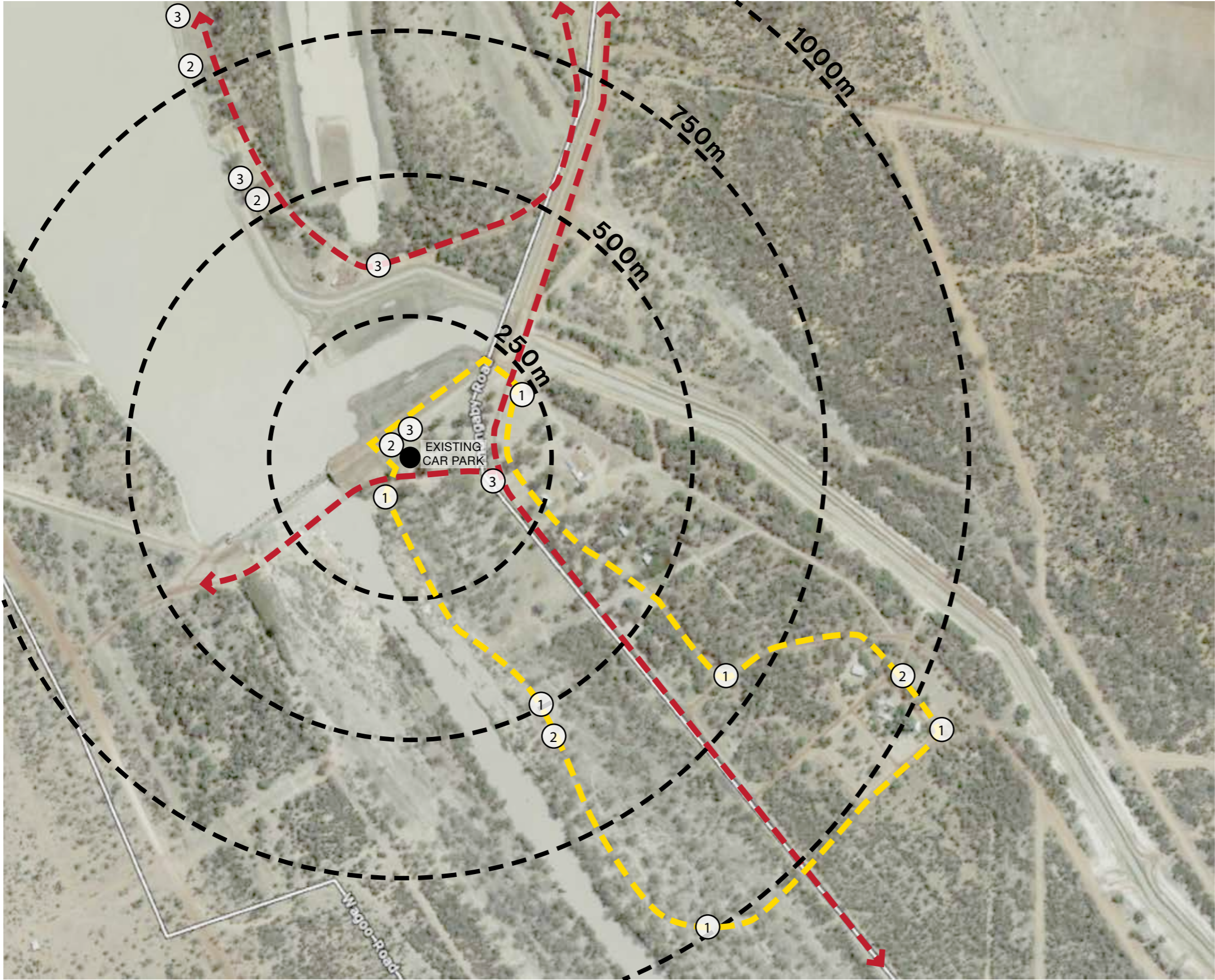


LEGEND:

- ① Existing Dam
- ② Existing Causeway
- ③ Existing Amenities
- ④ Refurbished Information Signage
- ⑤ Sunwater
- ⑥ Irrigated Picnic & BBQ Areas With Shelters - Extent of irrigated area - approx 3.5ha
- ⑦ Existing Car Parking
- ⑧ Existing Access
- ⑨ Existing Structures - Restricted Area
- ⑩ New Amenities Block - 2 x WC
- ⑪ Irrigated Open Kickabout Area
- ⑫ Cantilevered Shelter Lookouts with Concrete Seating
- ⑬ Existing Dirt Roads
- ⑭ Bus Drop-off
- Extent of Mallowa Irrigation Easement



3.5 CIRCULATION & WAYFINDING



① Place distance & direction markers at regular intervals along walking and cycling trails



② Place educational / interpretive signage at key areas to inform about history & local flora & fauna



③ Place information signage at key areas to inform about site usage rules and important locations

LEGEND:

- Vehicular Access
- Proposed Walking / Cycling Trail



3.6 PRECEDENT IMAGES

RECREATION



Kickabout Area



Walking Trails



Community Events



Sheltered Gathering Spaces

WATERSPORTS:



Water access for stand-up paddle-boards, canoes, kayaks etc



FISHING & BOATING:



Reinstated and relocated boat ramp for motor boats



AMENITIES:



Accessible public toilets



Seating & BBQ's providing community spaces

EXTRA-CURRICULAR ACTIVITIES - PRIVATELY OPERATED



High Ropes / Obstacle Course for Team Building



Refurbished Cabins for Camp Groups

3.7 COLOUR PALETTE

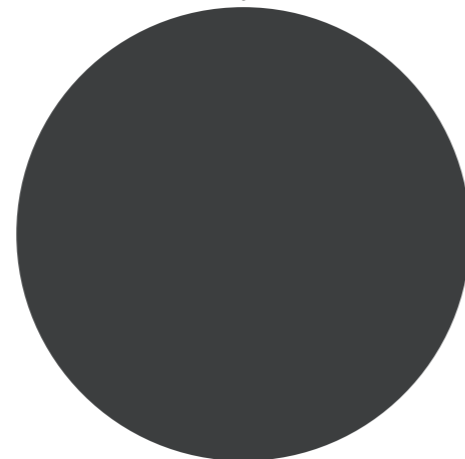
WOOD GRAIN ALUMINIUM



ALUMINIUM SPOTTED GUM

- + Timber-look furniture battens
- + Timber-look shelters

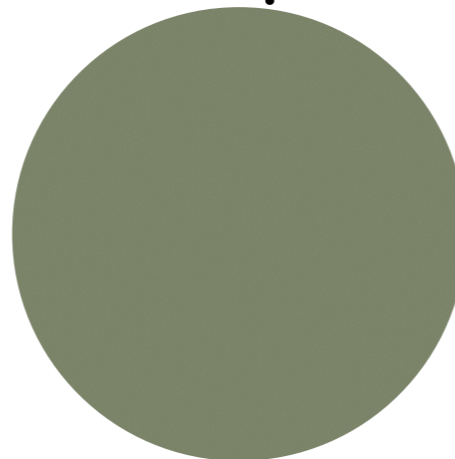
POWDER-COATING



DULUX MONUMENT

- + Powder-coated framing to furniture and shelters

COLORBOND



+ PALE EUCALYPT COLORBOND

- + Shelter roofing
- + Amenities block

ACCENTS



WEATHERED STEEL

- + Distance Markers
- + Wayfinding
- + Interpretive Signage

3.8 MATERIALS PALETTE

SURFACES:



Concrete



Road Extension & Carpark
To Match Existing



Turf



Sand

SERVICES:



Additional Electrical Points For Events

ELEMENTS:



Cantilevered Shelter to Top of Dam
Landmark Longreach Series



Shelter to Picnic Settings
Gossi Parkland Shelter



Amenities Block
Gossi AMT Range



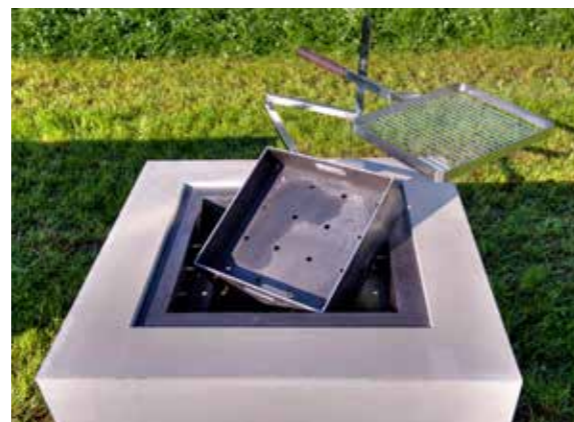
Aria Setting
Street Furniture Australia



Aria Seat
Street Furniture Australia



Fish Cleaning Station
Landmark Angelsea Series



Wood Fire BBQ



Anchored Wheelie Bins



Distance Markers & Wayfinding



Educational & Interpretive Signage

3.9 REVEGETATION SPECIES

TREES:



Botanical name: *Angophora ssp.*
Common name: Rusty Gum



Botanical name: *Callitris glaucophylla*
Common name: White Cypress Pine



Botanical name: *Casuarina cunninghamiana*
Common name: River Sheoak



Botanical name: *Corymbia tessellaris*
Common name: Carbeen



Botanical name: *Eucalyptus camaldulensis*
Common name: River Redgum



Botanical name: *Eucalyptus coolabah*
Common name: Coolibah



Botanical name: *Eucalyptus tereticornis*
Common name: Bluegum



Botanical name: *Melaleuca ssp.*
Common name: Paperbark

Species have been selected from Broad Vegetation Groups mapping data developed by the Queensland Government Department of Environment and Science.

3.10 PLANTING PALETTE

SHRUBS:



Acacia decora
Pretty Wattle



Enchylaena tomentosa
Ruby Saltbush



Calytrix longiflora
Pink Fringe Myrtle



Raphiolepis 'Springtime'
Hawthorn



Scaevola spinescens
-



Sclerolaena tricuspis
Giant Red Burr

GRASSES:



Carex appressa
Tall Sedge



Cyperus dissormis
Rice Sedge



Isolepis nodosa
Knobby Club-rush



Dianella longifolia
Blueberry Lily



Dianella revoluta
Flax-lily



Eleocharis atricha
Tuber Spike-rush

GROUNDCOVERS:



Disphyma crassifolium
Pigface



Leucopogon muticus
Blunt Beard-heat



Trianthema triquetra
Horse-Purslane



Ptilotus macrocephalus
Green Mulla Mulla



Wahlenbergia fluminalis
River Bluebell



Xerochrysum bracteatum
Golden Everlasting Daisy



www.groupgsa.com
ARN 3990

Sydney

Level 7, 80 William Street
East Sydney NSW 2011
Australia
T +612 9361 4144
E sydney@groupgsa.com

Melbourne

Level 1, 104 Exhibition Street
Melbourne VIC 3000
Australia
T +613 9416 5088
E melbourne@groupgsa.com

Brisbane

Level 14, 100 Edward Street
Brisbane QLD 4000
Australia
T +617 3210 2592
E brisbane@groupgsa.com

Shanghai

Room 407, No. 71, Xi Suzhou Road Jingan District
Shanghai 200041
PR China
T +86 182 1036 2158
E shanghai@groupgsa.com

Ho Chi Minh City

19th Floor – Havana Tower, 132 Ham Nghi,
Ben Thanh Ward, District 1, Ho Chi Minh City
Vietnam
T +84 8 3827 5385
E hcmc@groupgsa.com