

**PRECINCT AREA**

1 HIGHWAY SIGNAGE - ENTRY STATEMENT / FEATURE  
 • Entry Statement



• Directional Signage to key landmarks

2 HEBEL SPORTSGROUND  
 • Entrance beautification and signage  
 • New arena lighting  
 • Power upgrade  
 • Upgrade amenities

3 HEBEL GOLF COURSE  
 • Upgrade the greens and fairways  
 • Entrance beautification and signage

4 MAIN STREET -CASTLEREAGH HIGHWAY  
 • Refer Detailed Plan

5 TOWN PARK AND LIBRARY  
 • Refer Detailed Plan

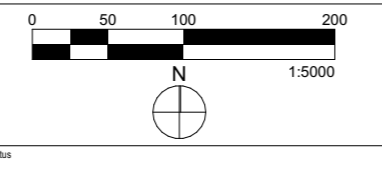
6 HEBEL HALL, HEALTH AND TENNIS COURTS  
 • Refer Detailed Plan

7 BOKHARA RIVER CAMPGROUNDS  
 • Refer Detailed Plan

- LEGEND:**
- Major walking trail (no footpath)
  - Minor walking trail (no footpath)
  - By pass route
  - New/ upgraded Buildings
  - Proposed trees
  - Existing tree
  - Proposed sculpture
  - Directional signage
  - General signage
  - Planting Palette - Tree Species
  - Planting Palette - Groundcovers and shrubs
  - Inground light
  - Light Pole
  - Seating
  - Bin
  - Picnic Setting
  - Shelters
  - Bollards
  - Truck Stop



No.	Revision - Revise on CAD do not amend by hand	Checked	Approved	Date	Status
2	PRELIMINARY ISSUED TO CLIENT	DS	DS	23/01/2024	
1	PRELIMINARY ISSUED TO CLIENT	DS	DS	30/05/2023	



Copyright  
 "This document is & shall remain the property of Complete Urban Pty. Ltd.  
 The document may only be used for the purpose for which it was commissioned & in accordance with the terms of engagement for the commission.  
 Unauthorised use of this document in any way is prohibited"



Suite 203  
 20 Lake Orr Drive  
 Varsity Lakes Qld 4227

P +61 5553 5555  
**COMPLETE**  
 ABN 64 100 037 812  
 www.completeurban.com.au

Scale	Drawn MM	Design DS	Project	8392 - Balonne Shire Council - Hebel Masterplan
Drafting DS	Design DS	Design DS	Title	Hebel - General Masterplan
Approved	For Information Only		Dwg No	8392 - MP00
This Drawing must not be used for Construction unless signed as Approved			Sheet	1 of 4
			Size	A3
			Rev	-

**PRECINCT AREA**

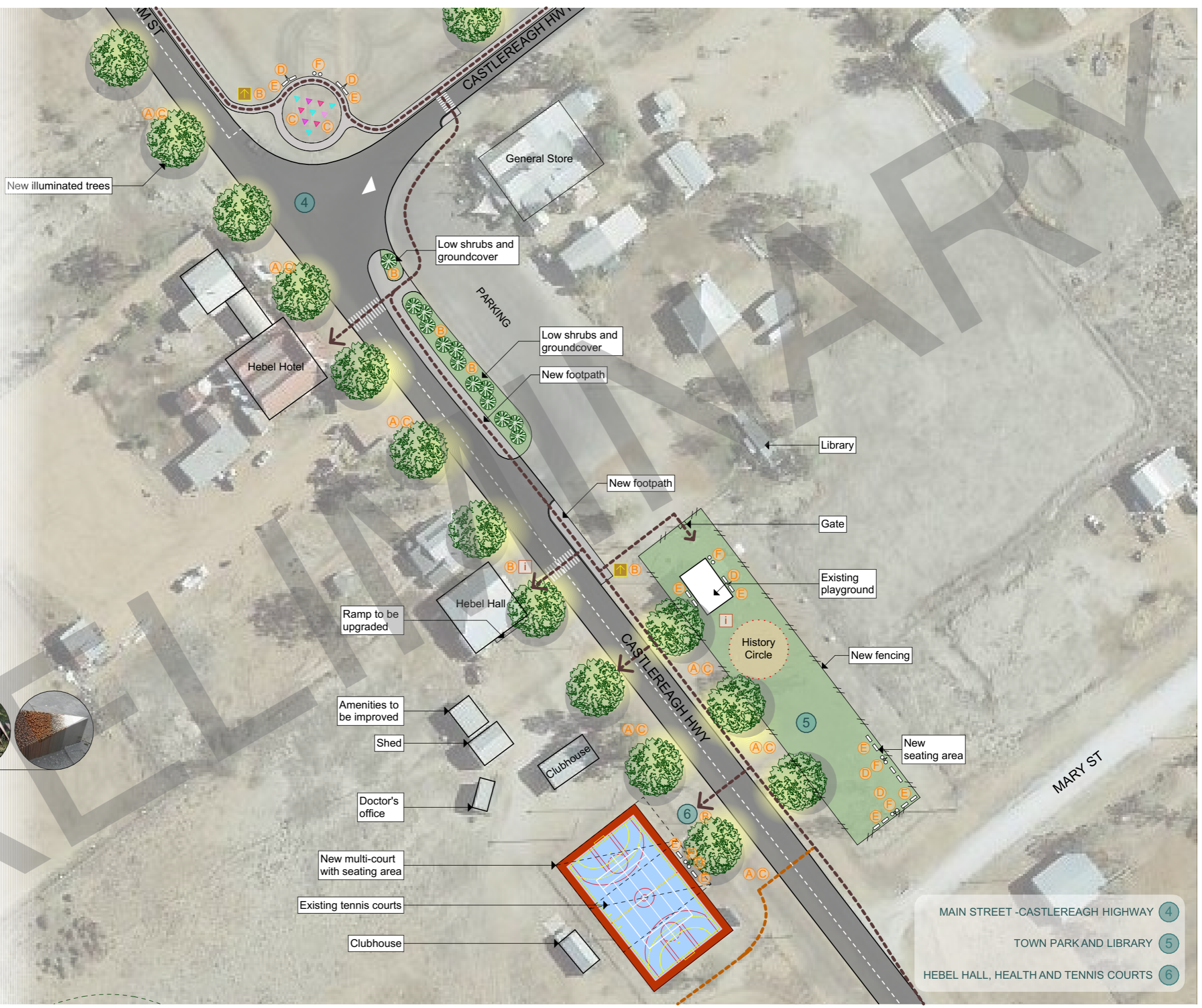
- 4**  
**MAIN STREET -CASTLEREAGH HIGHWAY**
- Eye-catching sculpture
  - Rustic look signs, planter boxes, dry desert gardens
  - Trees to reduce heat stress
  - Connect to the proposed stage footpath project
  - Directional signage to key landmarks
  - Illumination project

- 5**  
**TOWN PARK AND LIBRARY**
- Preserve the History Circle feature
  - Wider walking trail linked with History Circle
  - Connect to the proposed footpath project
  - Directional signage to key landmarks
  - Landscaping, new seating, tree planting, new signs

- 6**  
**HEBEL HALL, HEALTH AND TENNIS COURTS**
- Landscaping, new seating, trees, new signs
  - New multi-courts to replace the current tennis court
  - Improve amenities
  - Hall ramp upgrade

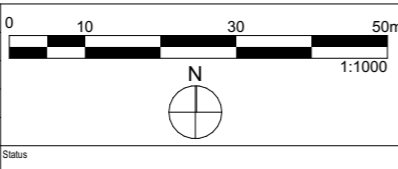
**LEGEND:**

- Major walking trail (no footpath)
- - - Minor walking trail (no footpath)
- By pass route
- New/ upgraded Buildings
- Proposed trees
- Existing tree
- ▲ Proposed sculpture
- Directional signage
- General signage
- Ⓐ Planting Palette - Tree Species
- Ⓑ Planting Palette - Groundcovers and shrubs
- Ⓒ Inground light
- Ⓓ Light Pole
- Ⓔ Seating
- Ⓕ Bin
- Ⓖ Picnic Setting
- Ⓗ Shelters
- Ⓘ Bollards
- Ⓣ Truck Stop



- MAIN STREET -CASTLEREAGH HIGHWAY 4
- TOWN PARK AND LIBRARY 5
- HEBEL HALL, HEALTH AND TENNIS COURTS 6

No.	Revision	Checked	Approved	Date	Status
2	PRELIMINARY ISSUED TO CLIENT	DS	DS	23/01/2024	
1	PRELIMINARY ISSUED TO CLIENT	DS	DS	30/05/2023	
	Revision - Revise on CAD do not amend by hand				



Copyright  
 "This document is & shall remain the property of Complete Urban Pty. Ltd.  
 The document may only be used for the purpose for which it was commissioned & in accordance with the terms of engagement for the commission. Unauthorised use of this document in any way is prohibited"



Suite 203  
 20 Lake Orr Drive  
 Varsity Lakes Qld 4227  
 P +61 5553 5555  
 www.completeurban.com.au



Scale	Drawn	MM	Designed	DS
	Drafting	DS	Design	DS
	Check	DS	Check	DS
Approved				
For Information Only				
This Drawing must not be used for Construction unless signed as Approved				

Project	8392 - Balonne Shire Council - Hebel Masterplan		
Title	Hebel - Masterplan Detail		
Dwg No	8392 - MP01	Sheet	2 of 4
Size	A3	Rev	-

**PRECINCT AREA**

**1**  
HIGHWAY SIGNAGE - ENTRY STATEMENT / FEATURE

- Entry Statement
- 

- Directional Signage to key landmarks

- 7**  
BOKHARA RIVER CAMPGROUNDS
- Landscaping and signage
  - Directional signage to key landmarks and camping
  - Widen entrance and bollards
  - Connect to the proposed stage footpath project
  - Review the fencing
  - Illuminate the feature entry tree
  - Concrete path around entrance
  - Installation of new picnic tables/ bbq shelters
  - Nature play
  - Upgrade the amenities (no shower)
  - Formalize parking
  - Possible Bore Bath/ Tourism project

**LEGEND:**

- Major walking trail (no footpath)
- Minor walking trail (no footpath)
- By pass route
- New/ upgraded Buildings
- Proposed trees
- Existing tree
- ▲ Proposed sculpture
- Directional signage
- General signage
- Ⓐ Planting Palette - Tree Species
- Ⓑ Planting Palette - Groundcovers and shrubs
- Ⓒ Inground light
- Ⓓ Light Pole
- Ⓔ Seating
- Ⓕ Bin
- Ⓖ Picnic Setting
- Ⓗ Shelters
- Ⓘ Bollards
- ⓵ Truck Stop



Existing flood infrastructure

Picnic settings and BBQ covered area

BOKHARA RIVER

BOKHARA CAMPGROUND

CARPARK

Nature Play

Existing shelter

New footpath

Existing feature tree to be illuminated

Concrete footpath with seating area

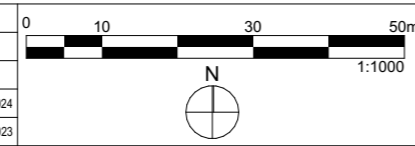
Existing amenities to be upgraded (no shower)

Entrance with bollards and concrete pathway

New footpath

CASTLEREAGH HWY

HIGHWAY SIGNAGE - ENTRY STATEMENT / FEATURE **1**  
BOKHARA RIVER CAMPGROUNDS **7**



Copyright  
"This document is & shall remain the property of Complete Urban Pty. Ltd.  
The document may only be used for the purposes for which it was commissioned & in accordance with the terms of engagement for the commission.  
Unauthorized use of the document in any way is prohibited"



Suite 203  
20 Lake Orr Drive  
Varsity Lakes Qld 4227

P +61 5553 5555

**COMPLETE**

ABN 64 100 037 812  
www.completeurban.com.au

Scale	Drawn	MM	Designed	DS
	Drafting	DS	Design	DS
	Check		Check	
Approved	For Information Only			
	This Drawing must not be used for Construction unless signed as Approved			

Project	8392 - Balonne Shire Council - Hebel Masterplan		
Title	Hebel - Masterplan Detail		
Dwg No	8392 - MP02	Sheet	3 of 4
Size	A3	Rev	-

No.	Revision - Revise on CAD do not amend by hand	Checked	Approved	Date	Status
2	PRELIMINARY ISSUED TO CLIENT	DS	DS	23/01/2024	
1	PRELIMINARY ISSUED TO CLIENT	DS	DS	30/05/2023	

**PLANTING PALETTE**

**A TREES:**



Botanical name: *Acacia salicina*  
Common name: Broughton Willow



Botanical name: *Eucalyptus camaldulensis*  
Common name: River red gum

**B GROUNDCOVERS:**



Botanical name: *Adenanthos cuneatus*  
Common name: Coastal jugflower



Botanical name: *Gomphrena celosioides*  
Common name: Bachelor's button

**B SHRUBS:**



Botanical name: *Austrostipa scabra*  
Common name: Speargrass



Botanical name: *Salsola Australis*  
Common name: Prickly saltwort



Botanical name: *Scleroaena diacantha*  
Common name: Grey copperburr

**MATERIALS PALETTE**



Concrete Path



Mass planting



Turf

**COLOUR PALETTE**



**Colorbond Manor Red**

**BEST USED FOR:**  
- Powdercoated metal furniture  
- Timber furniture with powdercoated framing



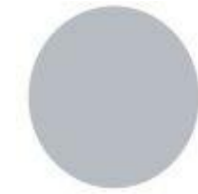
**Colorbond Classic Cream**

**BEST USED FOR:**  
- Signage



**Colorbond Pale Eucalypt**

**BEST USED FOR:**  
- Signage



**Colorbond Shale Grey**

**BEST USED FOR:**  
- Concrete Path

**LIGHTING:**

**C INGROUND LIGHT:**



[www.greenlux.com.au](http://www.greenlux.com.au)  
Inground Series 02 IP67



Application

**D LIGHT POLE:**



[www.greenlux.com.au](http://www.greenlux.com.au)  
Noble Series LED Street/ Garden Light



Application

**SIGNAGE:**



**FURNITURE:**

**E SEATING:**



[www.sparkfurniture.com.au](http://www.sparkfurniture.com.au)  
Gemtree seat

**F BIN:**



[www.sparkfurniture.com.au](http://www.sparkfurniture.com.au)  
GatewayBin

**G PICNIC SETTING:**



[www.sparkfurniture.com.au](http://www.sparkfurniture.com.au)  
Gemtree seat

**H SHELTERS:**



[www.landmarkpro.com.au](http://www.landmarkpro.com.au)  
Longreach Series

**I BOLLARDS:**



<https://outdoorstructures.com.au>  
Shore Timber Bollards

No.	Revision	Checked	Approved	Date	Status
2	PRELIMINARY ISSUED TO CLIENT	DS	DS	23/01/2024	
1	PRELIMINARY ISSUED TO CLIENT	DS	DS	30/05/2023	



Copyright  
"This document is & shall remain the property of Complete Urban Pty. Ltd.  
The document may only be used for the purpose for which it was commissioned & in accordance with the terms of engagement for the commission.  
Unauthorized use of this document in any way is prohibited"



Suite 203  
20 Lake Orr Drive  
Varsity Lakes Qld 4227

P +61 5553 5555

**COMPLETE**

ABN 64 100 037 812  
[www.completeurban.com.au](http://www.completeurban.com.au)

Scale	Project	8392 - Balonne Shire Council - Hebel Masterplan	
Drawn MM	Design DS	Title	
Drafting DS	Design DS	Hebel - Materials Palette and Planting Palette	
Approved	For Information Only	Dwg No	8392 -
This Drawing must not be used for Construction unless signed as Approved		Sheet	4 of 4
		Size	A3
		Rev	-